



Dedicated to Excellence
Cherry Creek Schools

CHERRY CREEK SCHOOL DISTRICT

CHERRY CREEK HIGH SCHOOL REBUILD

May 4th 2026



AGENDA

- Introductions
- Design Update
 - Design Process
 - Current Site Plan in Phase 1 and Phase 2
 - Concept Video Fly Around
- Construction Update
 - Schedule
 - Logistics

INTRODUCTIONS

CBRE

HCM | **RATIO**

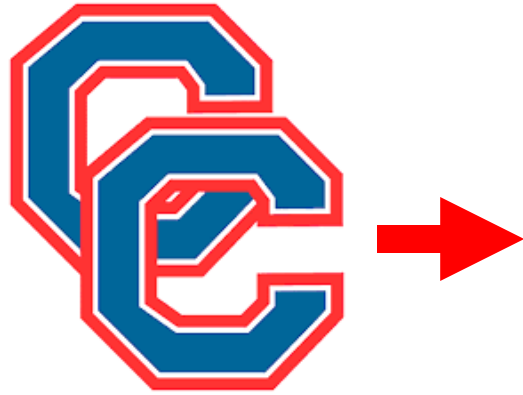
JHL
CONSTRUCTORS

Owners
Representative

Architect

General
Contractor

DESIGN TEAM PROCESS



Input and
collaboration with
students, staff,
administration &
district leadership

- **Visioning and Goals:** What are the project guiding principles
- **Programming:** What spaces are needed, how big and where do they go
- **Concept Site and Building Design:** How does it fit together and respect the master plan
- **Construction Documents Complete:** Phase 1
- **Preconstruction and Construction (ONGOING):** Cost estimating, logistics planning

DESIGN MEETINGS

January 6th – 10th 2025

January 17th 2025

January 17th 2025

January 28th 2025

January 30th 2025

February 7th 2025

April 11th 2025

May 14th - 19th 2025

August 11th 2025

September 4th 2025

October 21st 2025

November 14th 2025

November 24th 2025

November 24th 2025

January 12th 2026

March 5th 2026

April 16th 2026

CCHS Focus Group Meetings

Student Meeting (Principal Advisory Group)

Design Advisory Group

CCHS Staff Meeting

Parent Group Meeting

Design Advisory Group

Design Advisory Group

CCHS Focus Group Meetings

Staff Meeting

PTCO (Parent Teacher Community Organization)

PASS Community (Partnership for Academically Successful Students)

Future Bruins Night

CCHS Staff Meeting

Community Meeting

Accountability Meeting

PTCO (Parent Teacher Community Organization)

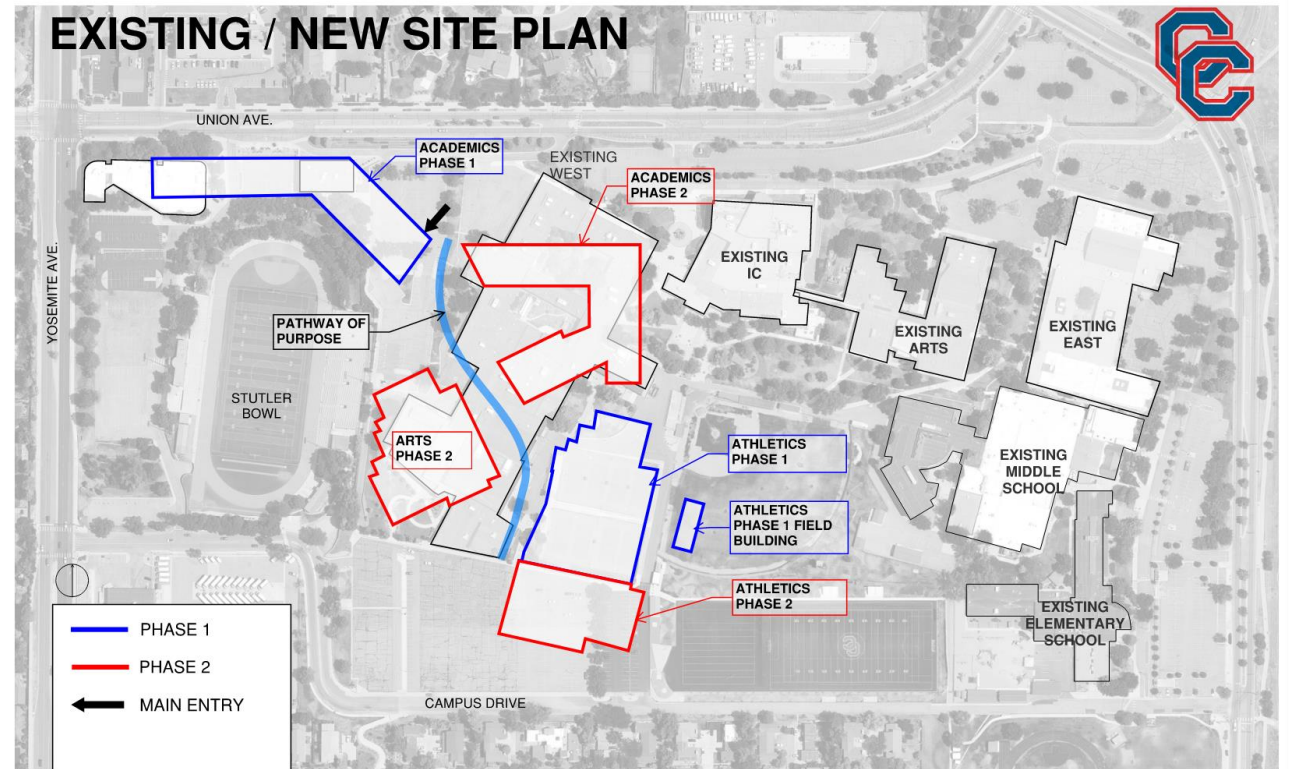
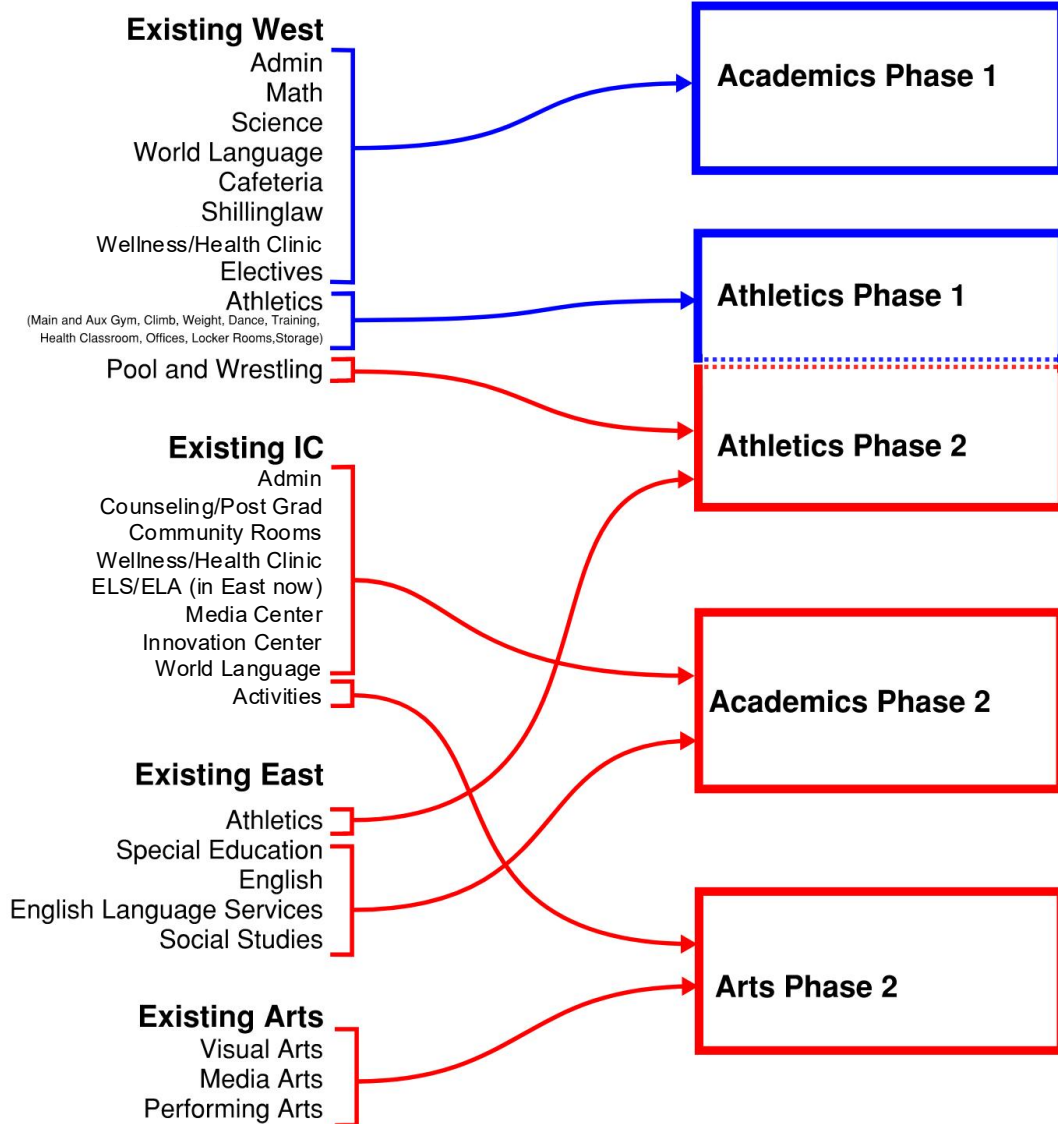
HOA Meeting

WHAT GOES WHERE?

■ PHASE 1 ■ PHASE 2

EXISTING BUILDINGS

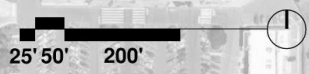
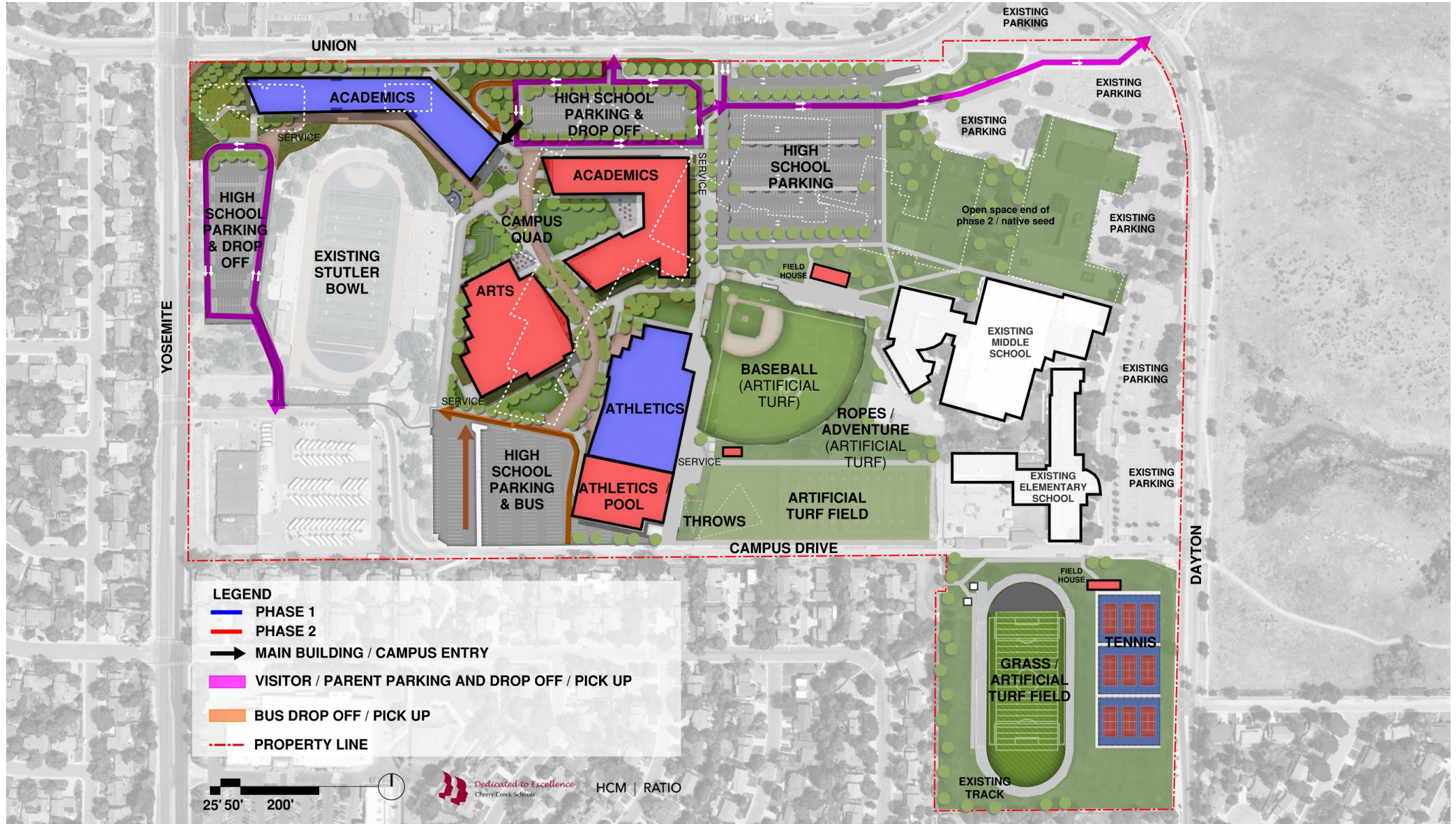
PROPOSED BUILDINGS



GUIDING PRINCIPLES

- **Collaborative and Inclusive Process**
 - Foster an engaging design process that values the contributions of all key stakeholders, including faculty, staff, students, community members, and partners.
- **Honoring History and Legacy**
 - Incorporate the rich history, legacy, and unique Creek identity into the design, telling a story that honors the past while inspiring the future.
- **Equity and Inclusion**
 - Create an inclusive and diverse environment that supports the success and well-being of all learners.
- **Innovative and Inspirational Spaces**
 - Design beautiful and forward-thinking spaces that reflect and enhance the excellence in education and learning taking place within the building.
- **Welcoming and Safe Accessibility**
 - Ensure clear entryways and wayfinding that promote a safe, accessible, and welcoming experience for all.
- **Continue Campus setting**
 - Include intentional outdoor spaces and connections between buildings to maximize the site use.
- **Exemplifying Excellence**
 - Develop a building that embodies the exceptional quality of learning and teaching that it houses.

END OF PHASE 2 SITE PLAN

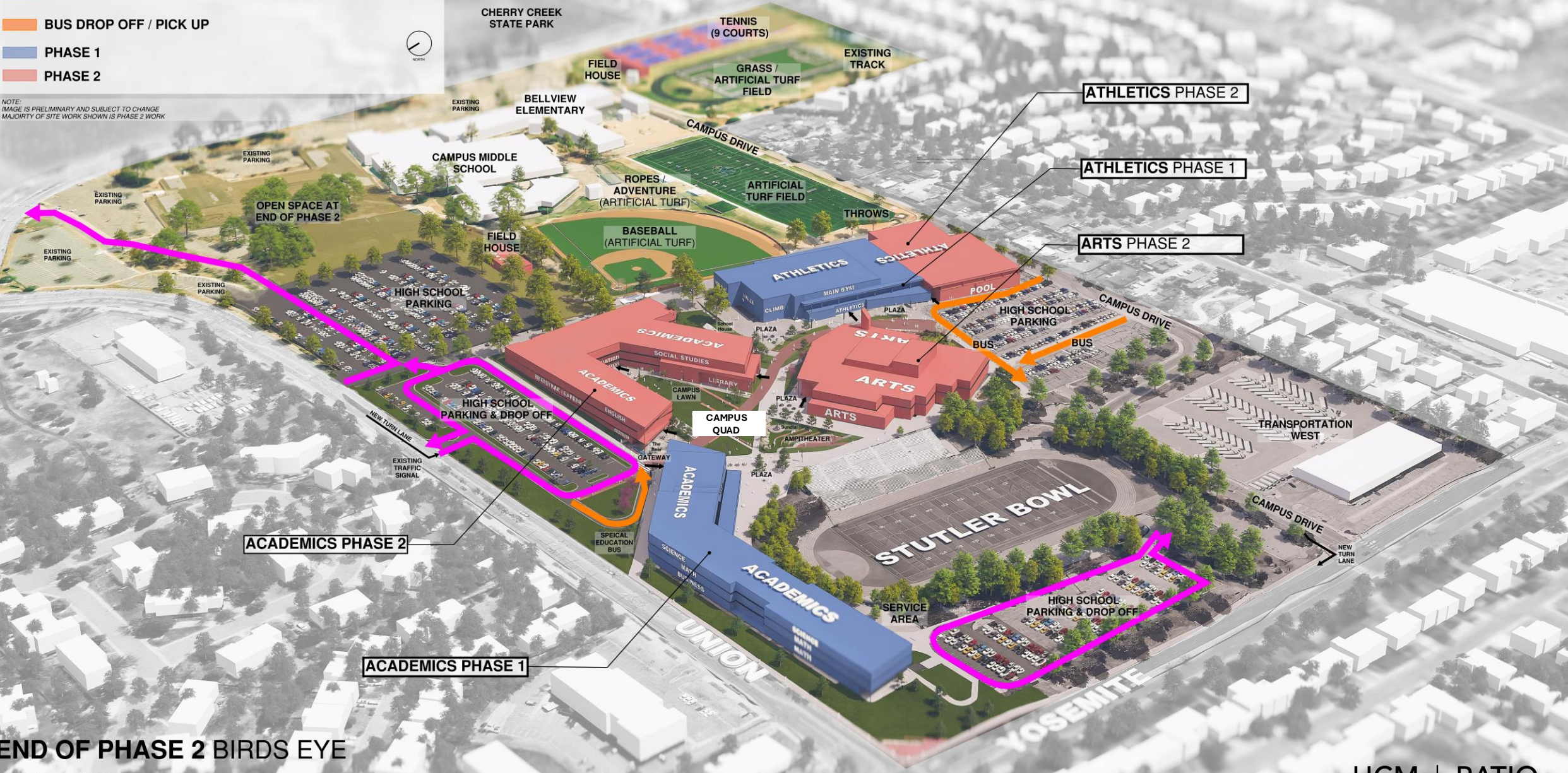


END OF PHASE 2 BIRDS EYE

LEGEND

- MAIN BUILDING ENTRY
- VISITOR / PARENT PARKING AND DROP OFF / PICK UP
- BUS DROP OFF / PICK UP
- PHASE 1
- PHASE 2

NOTE: IMAGE IS PRELIMINARY AND SUBJECT TO CHANGE
MAJORITY OF SITE WORK SHOWN IS PHASE 2 WORK

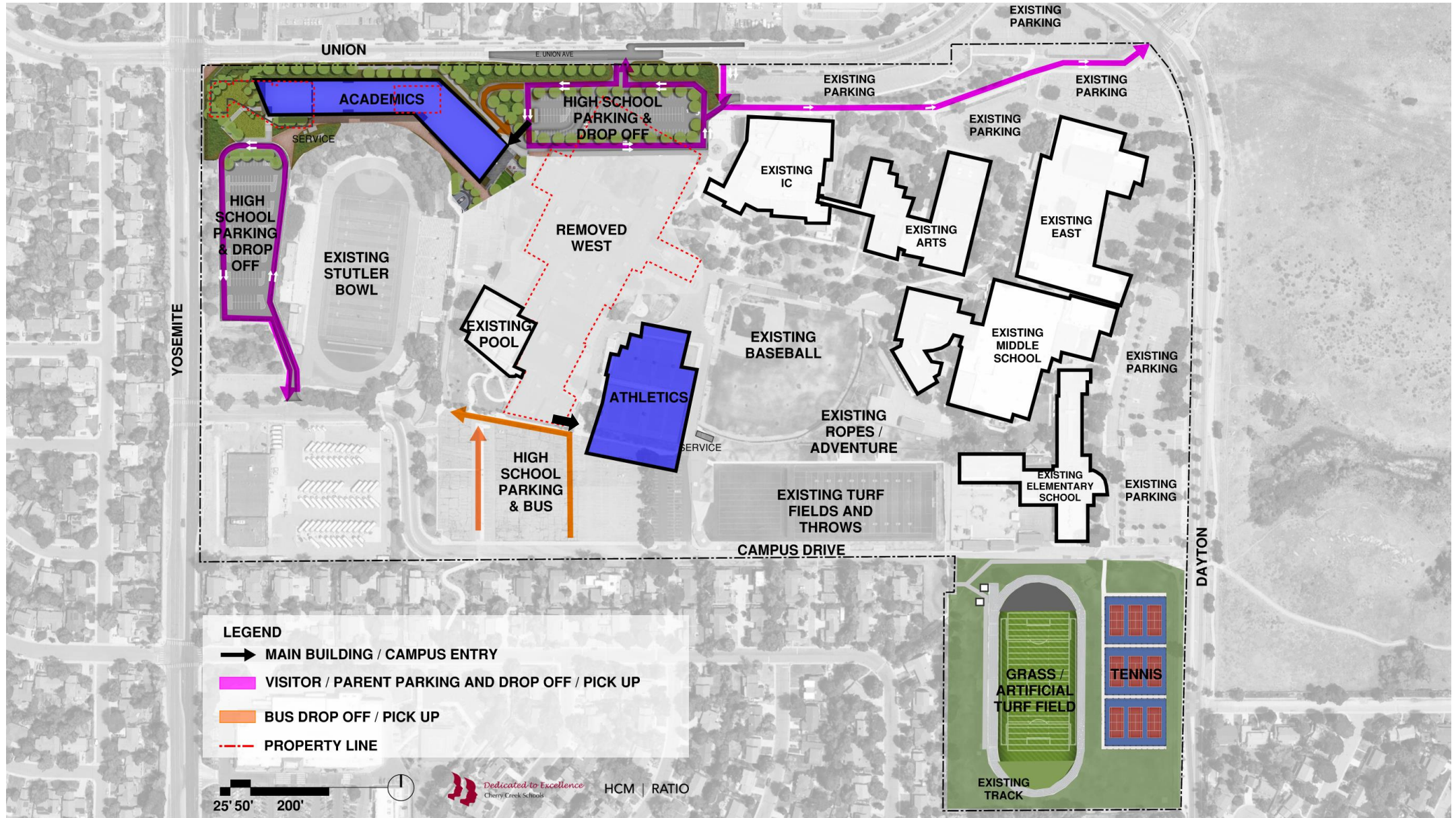


END OF PHASE 2 BIRDS EYE

HCM | RATIO

HCM | RATIO

END OF PHASE 1 SITE PLAN



Watch a video to see what the Cherry Creek campus will look like.

Video of Cherry Creek Campus future view

This link will open Vimeo.com in a new web browser tab.

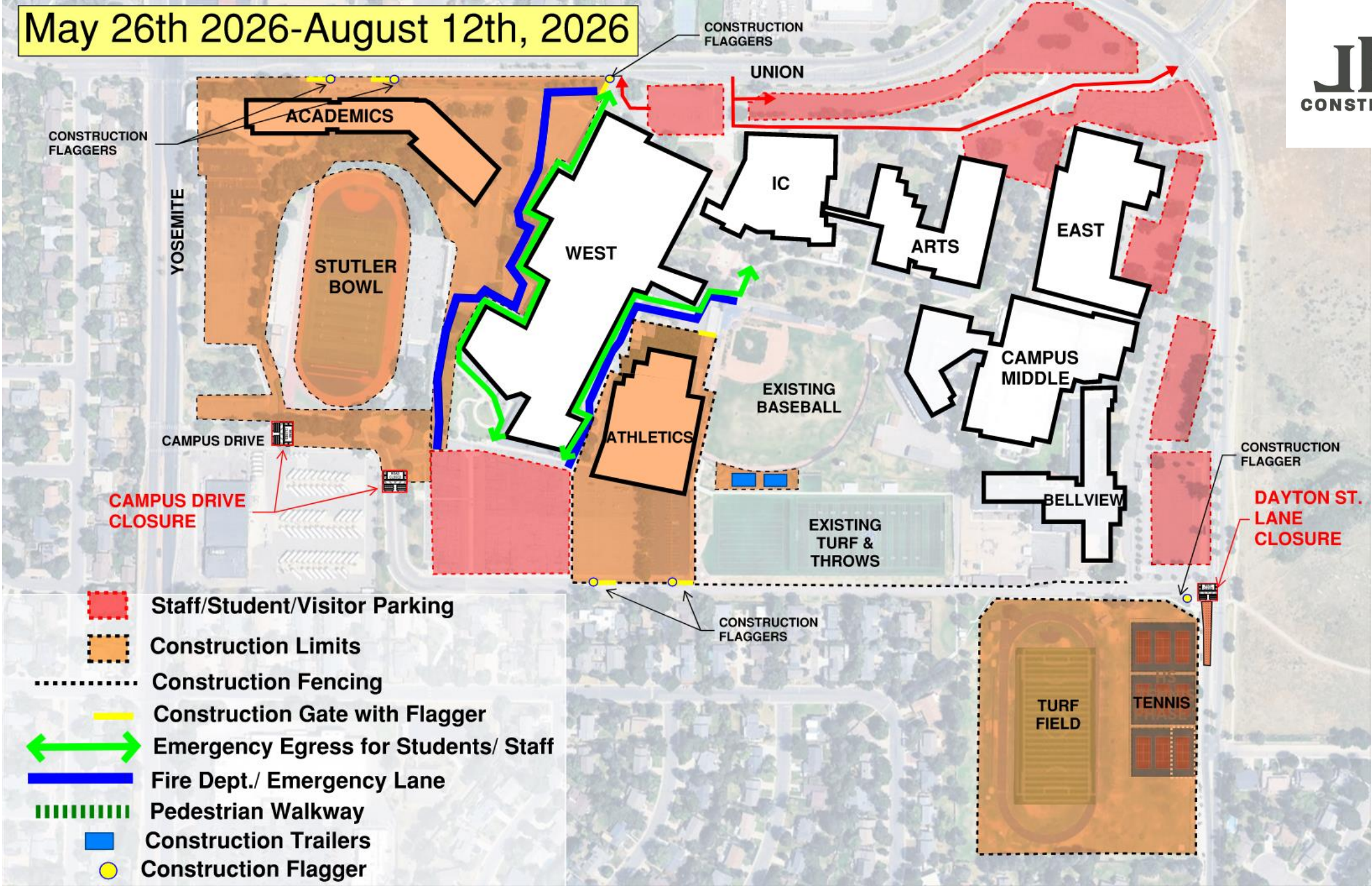
CONSTRUCTION UPDATE




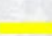



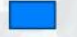

SCHEDULE / NEXT STEPS

START DATES ARE TENTATIVE AND PENDING JURISDICTIONAL PERMIT APPROVAL

- **ESC & OFS Demolition** : April – June 2026
- **Site Enabling** : March – August 2026
 - Site Demo, Existing Generator Relocation
 - Retaining Wall North of Stutler Bowl
 - Temp Fire Lanes & Pedestrian ADA Paths
 - Campus Drive Storm Sewer
- **Belleview Park (Tennis & Turf) & Stutler Turf** : March – August 2026
- **Academics Building Phase 1**: June 2026 – July 2028
- **Athletics Building Phase 1**: June 2026 – July 2028
- **Phase 1 Site Improvements**: June 2026 – Summer 2029
- **Demolition of West Building (Existing Pool to Remain)**: Summer 2028 – Spring 2029
- **Construction of Phase 2**: (dependent on successful bond election Nov 2028) Early 2029 – Summer 2032

May 26th 2026-August 12th, 2026



-  Staff/Student/Visitor Parking
-  Construction Limits
-  Construction Fencing
-  Construction Gate with Flagger
-  Emergency Egress for Students/ Staff
-  Fire Dept./ Emergency Lane
-  Pedestrian Walkway
-  Construction Trailers
-  Construction Flagger

Questions / Feedback?